

An abstract graphic of a network or web structure, composed of numerous blue lines connecting small dots, creating a complex, interconnected pattern against a dark background.

# Help, my network is alive! But how?

Keep an eye on everything with the new Inventory Engine from CANCOM.

It is well known that networks are busy places. Almost like a living organism, things are constantly changing: new devices are added, old devices become obsolete, weak points are discovered and software versions have to be maintained. How are you supposed to keep track of everything on a daily basis? How can you manage the installed base and the respective lifecycles reliably, automatically and efficiently? How do you prepare for important industry audits such as ISO, NIS2, DORA, TISAX and others?

The optimal answer to these questions is the Inventory Engine from CANCOM: Intelligence in miniature format with maximum impact and efficiency.

**CANCOM**

# The Inventory Engine from CANCOM.

## A hardened Linux appliance and API developed in-house by the intelligent networks specialists at CANCOM.

The CANCOM Inventory Engine is a discovery engine with maximum performance. It is a practical tool that runs on premises at your company to ensure secure and sustained asset, lifecycle and security management of your network. The CANCOM Inventory Engine is optimized for Cisco network landscapes (LAN, WAN, WLAN, DC) with a number of extensions (third-party providers).

### Advantages.

The CANCOM Inventory Engine enables you to answer the most important questions and address the key issues relating to network infrastructure:

- What is actually “alive” and active in our network? Routers, switches, access points, wireless controllers, etc.?
- Do we already have lifecycle issues in our network? Are there any devices that have already reached end-of-sale or end-of-support or that soon will?
- Which software versions and which licenses (subscriptions) are in use in our network? Do the versions comply with the manufacturer's recommendations and are they still supported?
- Which current security vulnerabilities are we potentially affected by?
- How reliable are the config backups of our systems?

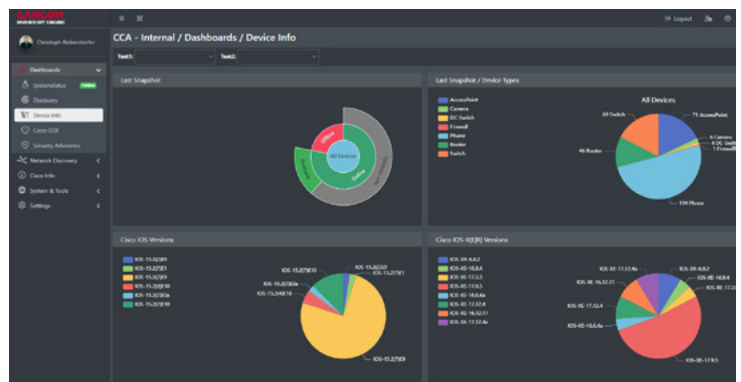
### The facts speak for themselves:

- ✓ Asset management (ITIL CMDB) of your entire network infrastructure (products, serial numbers, software versions, licenses, etc.) updated daily with historical comparison (What was added? What was removed or “RMA-ized”?)
- ✓ Inventorying of all connected third-party systems that can be identified using neighbor discovery protocols (CDP/LLDP) (IP phones, Webex boards, sensors, cameras, etc.)
- ✓ You have full interactive access to your network data and other reporting options via the CANCOM Inventory Engine web dashboard
- ✓ 100% transparency: You manage the system settings independently and have complete control
- ✓ Made in Austria: Programming and support in Austria
- ✓ Clear focus on asset, lifecycle and security management (not a monitoring system)
- ✓ Highest state-of-the-art security standards
- ✓ On-premises solution (data sovereignty)
- ✓ Hardware design as a high-quality miniature industrial server

### The dashboard – intuitive intelligence

The CANCOM Inventory Engine is designed for maximum user convenience as well as simple and fast operation. Users have an overview of all features and functionality at all times and can intuitively control and implement all settings.

**Additional details, product demo or prices on request.**



Minimum effort, maximum benefit – learn more about the CANCOM Inventory Engine today: [communication@cancom.com](mailto:communication@cancom.com)